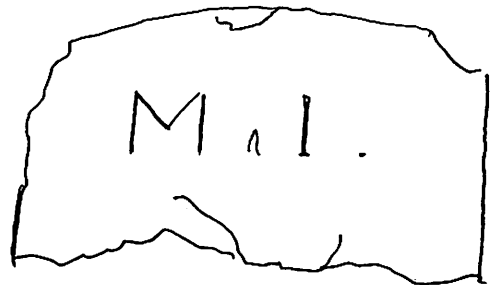


Grave Memorial Recording Form: St. John the Baptist, Westbourne, W. Sussex

1	National Grid Reference	Date	1	6	1	0	0	1
2	Name of recorder(s)	J. Storer						
3	Record No. of memorial (plus components i,ii,iii etc.)	O	R					
4	No. of components or inscribed faces (record on reverse if possible)					6	1	5
5	Type of memorial: 1 = flat 2 = head 3 = tomb 4 = foot 5 = tablet 6 = other							1
6	Material and geology							4
7	Stone mason or undertaker							
8	Which surfaces inscribed (facing N, S, E or W)							
9	No. of people commemorated							
10	Condition of monument: 1=sound 2=displaced 3=leaning 4=collapsed 5=damaged							?
11	Technique of inscription: 1 = incised 2 = carved in relief 3 = cast in relief 4 = lead letters 5 = painted							2 5
12	Condition of inscription 1 = very good 2 = clear 3 = worn but decipherable 4 = partly legible 5 = illegible							1
13	Dimensions (metric)							4
		height						
		width						
14	Date of memorial ? 1757+	Thickness (or length in case of tombs)						
		Register						
Drawing or Photograph		Inscription						

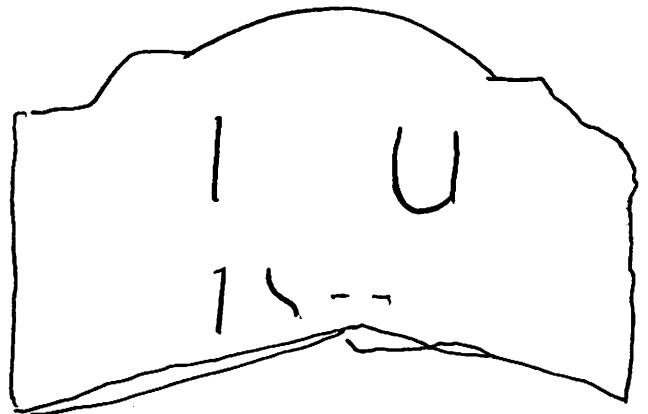
most likely
NW 71 Mary Eames 1757



Grave Memorial Recording Form: St. John the Baptist, Westbourne, W. Sussex

1	National Grid Reference	Date	1	6	1	0	0	1
2	Name of recorder(s)	J. Storer						
3	Record No. of memorial (plus components I,ii,III etc.)	0	12	6	1	6		
4	No. of components or inscribed faces (record on reverse if possible)							
5	Type of memorial: 1 = flat 2 = head 3 = tomb 4 = foot 5 = tablet 6 = other	4						
6	Material and geology							
7	Stone mason or undertaker							
8	Which surfaces inscribed (facing N, S, E or W)							
9	No. of people commemorated							
10	Condition of monument: 1=sound 2=displaced 3=leaning 4=collapsed 5=damaged	2 5						
11	Technique of inscription: 1 = incised 2 = carved in relief 3 = cast in relief 4 = lead letters 5 = painted	1						
12	Condition of inscription 1 = very good 2 = clear 3 = worn but decipherable 4 = partly legible 5 = illegible	4						
13	Dimensions (metric)	height						
		width						
14	Date of memorial	Thickness (or length in case of tombs)						
		Register						
Drawing or Photograph		Inscription						

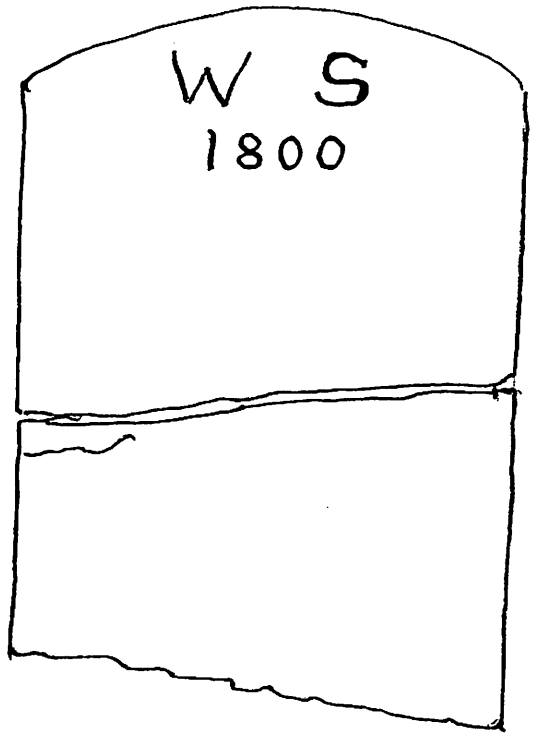
possibly NE 265
Locklin Ave 1838



Grave Memorial Recording Form: St. John the Baptist, Westbourne, W. Sussex

1	National Grid Reference	755 073	Date	1	6	1	0	0	1
2	Name of recorder(s)	J. Storer							
3	Record No. of memorial (plus components i,ii,iii etc.)	O R 6 1 7							
4	No. of components or inscribed faces (record on reverse if possible)	1							
5	Type of memorial: 1 = flat 2 = head 3 = tomb 4 = foot 5 = tablet 6 = other	4							
6	Material and geology	LIMESTONE							
7	Stone mason or undertaker								
8	Which surfaces inscribed (facing N, S, E or W)								
9	No. of people commemorated	/ / / /							
10	Condition of monument: 1=sound 2=displaced 3=leaning 4=collapsed 5=damaged	?							
11	Technique of inscription: 1 = incised 2 = carved in relief 3 = cast in relief 4 = lead letters 5 = painted	2 5							
12	Condition of inscription 1 = very good 2 = clear 3 = worn but decipherable 4 = partly legible 5 = illegible	1							
13	Dimensions (metric)	4							
		height							
		width							
14	Date of memorial	1800+	Thickness (or length in case of tombs)	Register					
Drawing or Photograph		Inscription							

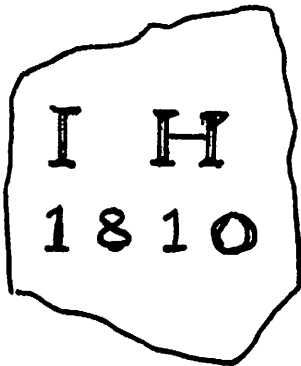
prob. Whicher Souter 1800
W 48



(Sperling's record no not found)

Grave Memorial Recording Form: St. John the Baptist, Westbourne, W. Sussex

1	National Grid Reference	755 073	Date	1	6	1	0	0	1
2	Name of recorder(s)	BERYL LINDER							
3	Record No. of memorial (plus components i,ii,iii etc.)	0 R 6 1 8							
4	No. of components or inscribed faces (record on reverse if possible)	1							
5	Type of memorial: 1 = flat 2 = head 3 = tomb 4 = foot 5 = tablet 6 = other	4							
6	Material and geology	L I M E S T O N E							
7	Stone mason or undertaker								
8	Which surfaces inscribed (facing N, S, E or W)	N/A							
9	No. of people commemorated	1							
10	Condition of monument: 1=sound 2=displaced 3=leaning 4=collapsed 5=damaged	2 5							
11	Technique of inscription: 1 = Incised 2 = carved in relief 3 = cast in relief 4 = lead letters 5 = painted	1							
12	Condition of inscription 1 = very good 2 = clear 3 = worn but decipherable 4 = partly legible 5 = illegible	2							
13	Dimensions (metric)	height							
		width							
14	Date of memorial	1810	Thickness (or length in case of tombs)						
			Register						
Drawing or Photograph					Inscription				

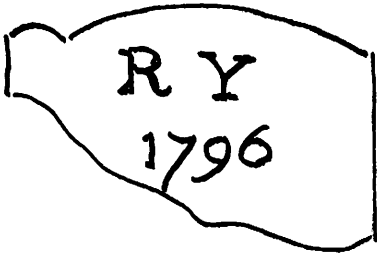


not found
only faint possibility is
Margaret Hoar 1810, no. NE 306

(Sperling's record no. *not found*)

Grave Memorial Recording Form: St. John the Baptist, Westbourne, W. Sussex

1	National Grid Reference	755 073	Date	1	6	1	0	0	1
2	Name of recorder(s)	BERYL LINDER							
3	Record No. of memorial (plus components i,ii,iii etc.)	C	R						
4	No. of components or inscribed faces (record on reverse if possible)					6	1		9
5	Type of memorial: 1 = flat 2 = head 3 = tomb 4 = foot 5 = tablet 6 = other								1
6	Material and geology	LIMESTONE							
7	Stone mason or undertaker								
8	Which surfaces inscribed (facing N, S, E or W)	N/A							
9	No. of people commemorated	N/A							
10	Condition of monument: 1=sound 2=displaced 3=leaning 4=collapsed 5=damaged								1
11	Technique of inscription: 1 = incised 2 = carved in relief 3 = cast in relief 4 = lead letters 5 = painted							2	5
12	Condition of inscription 1 = very good 2 = clear 3 = worn but decipherable 4 = partly legible 5 = illegible								1
13	Dimensions (metric)								2
		height		2	0				0
		width		3	5				0
14	Date of memorial	1796 ⁺	Thickness (or length in case of tombs)						
			Register						
Drawing or Photograph		Inscription							

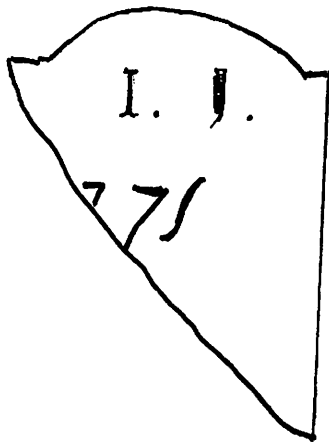


NEB 180 Rebeca w. of Joseph Yalden
d. Feb. 24 1796

(Sperling's record no. 2147.)

Grave Memorial Recording Form: St. John the Baptist, Westbourne, W. Sussex

1	National Grid Reference	755 073	Date	1	6	1	0	0	1
2	Name of recorder(s)	BERYL LINDER							
3	Record No. of memorial (plus components I,II,III etc.)	0 R 6 2 0							
4	No. of components or inscribed faces (record on reverse if possible)	1							
5	Type of memorial: 1 = flat 2 = head 3 = tomb 4 = foot 5 = tablet 6 = other								
6	Material and geology	LIMESTONE							
7	Stone mason or undertaker								
8	Which surfaces inscribed (facing N, S, E or W)	N/A							
9	No. of people commemorated	1							
10	Condition of monument: 1=sound 2=displaced 3=leaning 4=collapsed 5=damaged	2 5							
11	Technique of inscription: 1 = incised 2 = carved in relief 3 = cast in relief 4 = lead letters 5 = painted	1							
12	Condition of inscription 1 = very good 2 = clear 3 = worn but decipherable 4 = partly legible 5 = illegible								
13	Dimensions (metric)	height	3	5	4	width	3	0	0
14	Date of memorial	1771+	Thickness (or length in case of tombs)	Register					
Drawing or Photograph					Inscription				



poss. John Jenman NE 280, 1771

(Sperling's record no. 12.8...)

Grave Memorial Recording Form: St. John the Baptist, Westbourne, W. Sussex

1	National Grid Reference	Date	1	6	1	0	0	1
2	Name of recorder(s)	BERYL LINDER						
3	Record No. of memorial (plus components I,II,III etc.)	0	R			6	2	1
4	No. of components or inscribed faces (record on reverse if possible)							
5	Type of memorial: 1 = flat 2 = head 3 = tomb 4 = foot 5 = tablet 6 = other	4						
6	Material and geology	LIMESTONE						
7	Stone mason or undertaker							
8	Which surfaces inscribed (facing N, S, E or W)	N/A						
9	No. of people commemorated	1						
10	Condition of monument: 1=sound 2=displaced 3=leaning 4=collapsed 5=damaged	2 5						
11	Technique of inscription: 1 = incised 2 = carved in relief 3 = cast in relief 4 = lead letters 5 = painted	1						
12	Condition of inscription 1 = very good 2 = clear 3 = worn but decipherable 4 = partly legible 5 = illegible	3						
13	Dimensions (metric)	height						
		width	3	5	0			
14	Date of memorial 1789 ⁺	Thickness (or length in case of tombs)	Register					
Drawing or Photograph		Inscription						

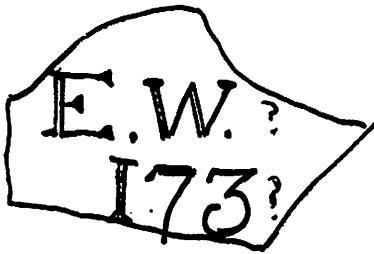


prob. Henry Hills 1789 NW100

(Sperling's record: not found)

Grave Memorial Recording Form: St. John the Baptist, Westbourne, W. Sussex

1	National Grid Reference	755 073	Date	1	6	1	0	0	1
2	Name of recorder(s)	BERYL LINDER							
3	Record No. of memorial (plus components i,ii,iii etc.)	O R 6 2 2							
4	No. of components or inscribed faces (record on reverse if possible)	1							
5	Type of memorial: 1 = flat 2 = head 3 = tomb 4 = foot 5 = tablet 6 = other	4							
6	Material and geology	LIMESTONE							
7	Stone mason or undertaker								
8	Which surfaces inscribed (facing N, S, E or W)	N/A							
9	No. of people commemorated	1							
10	Condition of monument: 1=sound 2=displaced 3=leaning 4=collapsed 5=damaged	2 5							
11	Technique of inscription: 1 = incised 2 = carved in relief 3 = cast in relief 4 = lead letters 5 = painted	1							
12	Condition of inscription 1 = very good 2 = clear 3 = worn but decipherable 4 = partly legible 5 = illegible	4							
13	Dimensions (metric)	height							
		width							
14	Date of memorial 173 -	Thickness (or length in case of tombs)							
		Register							
Drawing or Photograph					Inscription				

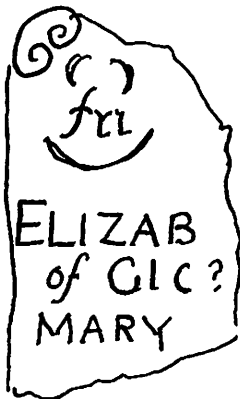


[not found in Sperling
or register]

(Sperling's record-not found)

Grave Memorial Recording Form: St. John the Baptist, Westbourne, W. Sussex

1	National Grid Reference	255 073	Date	1	6	1	0	0	1
2	Name of recorder(s)	BERYL LINDER							
3	Record No. of memorial (plus components i,ii,iii etc.)	9	R				6	2	3
4	No. of components or inscribed faces (record on reverse if possible)								
5	Type of memorial: 1 = flat 2 = head 3 = tomb 4 = foot 5 = tablet 6 = other	2							
6	Material and geology	LIMESTONE							
7	Stone mason or undertaker								
8	Which surfaces inscribed (facing N, S, E or W)	N/A							
9	No. of people commemorated	2							
10	Condition of monument: 1=sound 2=displaced 3=leaning 4=collapsed 5=damaged	2 5							
11	Technique of inscription: 1 = incised 2 = carved in relief 3 = cast in relief 4 = lead letters 5 = painted	1							
12	Condition of inscription 1 = very good 2 = clear 3 = worn but decipherable 4 = partly legible 5 = illegible	4							
13	Dimensions (metric)	height							
		width							
14	Date of memorial	Register							
Drawing or Photograph					Inscription				



not found in Sperling or register;
prob. an Elizabeth d. of George
& Mary ...

Grave Memorial Recording Form: St. John the Baptist, Westbourne, W. Sussex

1	National Grid Reference	255 073	Date	1	6	1	0	0	1
2	Name of recorder(s)	BERYL LINDER							
3	Record No. of memorial (plus components i,ii,iii etc.)	O R 6 2 4							
4	No. of components or inscribed faces (record on reverse if possible)	1							
5	Type of memorial: 1 = flat 2 = head 3 = tomb 4 = foot 5 = tablet 6 = other	4							
6	Material and geology	L I M E S T O N E							
7	Stone mason or undertaker								
8	Which surfaces inscribed (facing N, S, E or W)	N/A							
9	No. of people commemorated	3							
10	Condition of monument: 1=sound 2=displaced 3=leaning 4=collapsed 5=damaged	2 5							
11	Technique of inscription: 1 = incised 2 = carved in relief 3 = cast in relief 4 = lead letters 5 = painted	1							
12	Condition of inscription 1 = very good 2 = clear 3 = worn but decipherable 4 = partly legible 5 = illegible	3							
13	Dimensions (metric)	height							
		width	3	2					
14	Date of memorial	1803 +	Thickness (or length in case of tombs)						
			Register						
Drawing or Photograph					Inscription				

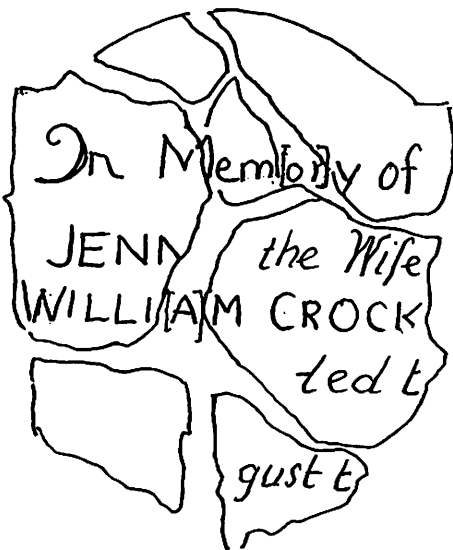
JB 1803
MB 1803
SG 1834

NWB 147
James Bishop 1803
Mary Bishop 1803
Sarah Gregory 1834

(Sperling's record no...42...)

Grave Memorial Recording Form: St. John the Baptist, Westbourne, W. Sussex

1	National Grid Reference	755 073	Date	1	6	1	0	0	1
2	Name of recorder(s)	BERYL LINGER							
3	Record No. of memorial (plus components i,ii,iii etc.)	0 R 6 2 5							
4	No. of components or inscribed faces (record on reverse if possible)	1							
5	Type of memorial: 1 = flat 2 = head 3 = tomb 4 = foot 5 = tablet 6 = other	2							
6	Material and geology	LIMESTONE							
7	Stone mason or undertaker	none found							
8	Which surfaces inscribed (facing N, S, E or W)	N/A							
9	No. of people commemorated	1							
10	Condition of monument: 1=sound 2=displaced 3=leaning 4=collapsed 5=damaged	2 5							
11	Technique of inscription: 1 = incised 2 = carved in relief 3 = cast in relief 4 = lead letters 5 = painted	1							
12	Condition of inscription 1 = very good 2 = clear 3 = worn but decipherable 4 = partly legible 5 = illegible	3							
13	Dimensions (metric)	height	6	2	3	width	6	0	0
14	Date of memorial	1777+	Register Jane Crockford, w. of William Crockford. bu. 17 August 1777						
Drawing or Photograph					Inscription				

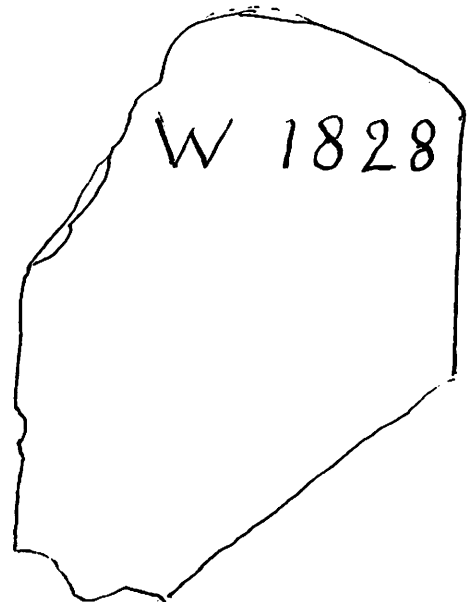


Sperling no. 42
 Jenny w. of William Crockford
 d. 15 August 1777 a. 55

Grave Memorial Recording Form: St. John the Baptist, Westbourne, W. Sussex

1	National Grid Reference	755 073	Date	1	6	1	0	0	1
2	Name of recorder(s)	J. Storer							
3	Record No. of memorial (plus components i,ii,iii etc.)	O R 6 2 6							
4	No. of components or inscribed faces (record on reverse if possible)	1							
5	Type of memorial: 1 = flat 2 = head 3 = tomb 4 = foot 5 = tablet 6 = other	4							
6	Material and geology	Limestone							
7	Stone mason or undertaker								
8	Which surfaces inscribed (facing N, S, E or W)	/ / / /							
9	No. of people commemorated	1							
10	Condition of monument: 1=sound 2=displaced 3=leaning 4=collapsed 5=damaged	2 5							
11	Technique of inscription: 1 = incised 2 = carved in relief 3 = cast in relief 4 = lead letters 5 = painted	1							
12	Condition of inscription 1 = very good 2 = clear 3 = worn but decipherable 4 = partly legible 5 = illegible	4							
13	Dimensions (metric)	height width Thickness (or length in case of tombs)							
14	Date of memorial	1828+	Register						
Drawing or Photograph					Inscription				

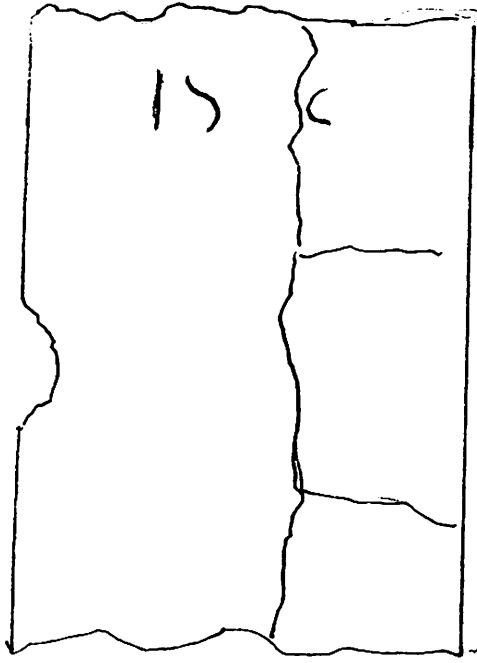
poss. Robert Webb 1828, NEB 192, but his wife Mary, 1830, should be there too.
In register also:
Georgiana Word 1828 a. 3
Geo. Winham 1828 a. 6wks.



(Sperling's record no. /.....)

Grave Memorial Recording Form: St. John the Baptist, Westbourne, W. Sussex

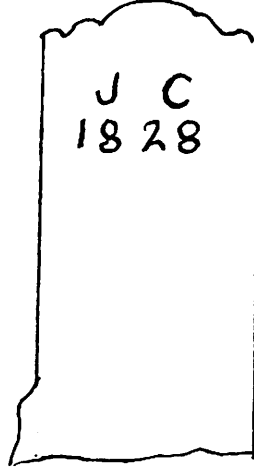
1	National Grid Reference	Date	1	6	1	0	0	1
2	Name of recorder(s)	J. Storer						
3	Record No. of memorial (plus components i,ii,iii etc.)	D	R			6	2	7
4	No. of components or inscribed faces (record on reverse if possible)							1
5	Type of memorial: 1 = flat 2 = head 3 = tomb 4 = foot 5 = tablet 6 = other							4
6	Material and geology	limestone						
7	Stone mason or undertaker							
8	Which surfaces inscribed (facing N, S, E or W)							
9	No. of people commemorated							
10	Condition of monument: 1=sound 2=displaced 3=leaning 4=collapsed 5=damaged							?
11	Technique of inscription: 1 = incised 2 = carved in relief 3 = cast in relief 4 = lead letters 5 = painted						2	5
12	Condition of inscription 1 = very good 2 = clear 3 = worn but decipherable 4 = partly legible 5 = illegible							1
13	Dimensions (metric)	height						4
		width						
14	Date of memorial	Thickness (or length in case of tombs)						
		Register						
Drawing or Photograph		Inscription						



Grave Memorial Recording Form: St. John the Baptist, Westbourne, W. Sussex

1	National Grid Reference	7 5 5 0 7 3	Date	1	6	1	0	0	0
2	Name of recorder(s)	J. Storer							
3	Record No. of memorial (plus components i,ii,iii etc.)	0	R				6	2	8
4	No. of components or inscribed faces (record on reverse if possible)								
5	Type of memorial: 1 = flat 2 = head 3 = tomb 4 = foot 5 = tablet 6 = other								
6	Material and geology	Limestone							
7	Stone mason or undertaker								
8	Which surfaces inscribed (facing N, S, E or W)								
9	No. of people commemorated								
10	Condition of monument: 1=sound 2=displaced 3=leaning 4=collapsed 5=damaged								
11	Technique of inscription: 1 = incised 2 = carved in relief 3 = cast in relief 4 = lead letters 5 = painted								
12	Condition of inscription 1 = very good 2 = clear 3 = worn but decipherable 4 = partly legible 5 = illegible								
13	Dimensions (metric)	height		6	9	3			
		width		3	2	5			
		Thickness (or length in case of tombs)							
14	Date of memorial	1828	Register						
Drawing or Photograph					Inscription				

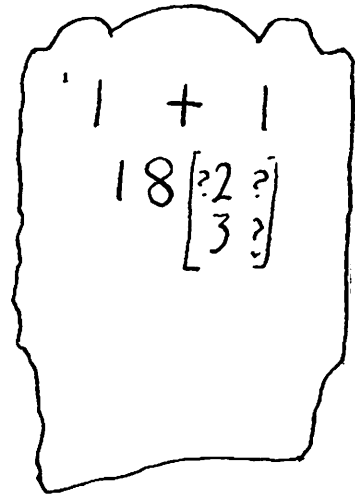
prob. NW87
John Cook 1828



Grave Memorial Recording Form: St. John the Baptist, Westbourne, W. Sussex

1	National Grid Reference	755 073	Date	1	0	1	0	0	1	
2	Name of recorder(s)	J. Storey								
3	Record No. of memorial (plus components i,ii,iii etc.)		0	R			6	2	9	
4	No. of components or inscribed faces (record on reverse if possible)									
5	Type of memorial: 1 = flat 2 = head 3 = tomb 4 = foot 5 = tablet 6 = other									
6	Material and geology	limestone							4	
7	Stone mason or undertaker									
8	Which surfaces inscribed (facing N, S, E or W)									
9	No. of people commemorated									
10	Condition of monument: 1=sound 2=displaced 3=leaning 4=collapsed 5=damaged								2	5
11	Technique of inscription: 1 = incised 2 = carved in relief 3 = cast in relief 4 = lead letters 5 = painted									1
12	Condition of inscription 1 = very good 2 = clear 3 = worn but decipherable 4 = partly legible 5 = illegible									
13	Dimensions (metric)			height		4	0		4	
				width		3	3		0	
				Thickness (or length in case of tombs)						
14	Date of memorial ?1820's	Register								
Drawing or Photograph					Inscription					

not found



(Sperling's record no. *not found*)

Grave Memorial Recording Form: St. John the Baptist, Westbourne, W. Sussex

1	National Grid Reference	755 073	Date	1	6	1	0	0	1
2	Name of recorder(s)	J. Stover							
3	Record No. of memorial (plus components i,ii,iii etc.)	O R 6 3 0							
4	No. of components or inscribed faces (record on reverse if possible)	1							
5	Type of memorial: 1 = flat 2 = head 3 = tomb 4 = foot 5 = tablet 6 = other	4							
6	Material and geology	Limestone							
7	Stone mason or undertaker								
8	Which surfaces inscribed (facing N, S, E or W)	/ / / /							
9	No. of people commemorated	2 2							
10	Condition of monument: 1=sound 2=displaced 3=leaning 4=collapsed 5=damaged	2 5							
11	Technique of inscription: 1 = incised 2 = carved in relief 3 = cast in relief 4 = lead letters 5 = painted	1							
12	Condition of inscription 1 = very good 2 = clear 3 = worn but decipherable 4 = partly legible 5 = illegible	4							
13	Dimensions (metric)	height	3	3	0	width	3	7	5
14	Date of memorial	1736	Register	James s. of James Emery bu. 28 Feb. 1710 // Francis Emery bu. 16 June 1736					
Drawing or Photograph					Inscription				

Francis Emery bu. 16 June 1736
 James Emery bu. 28 Feb. 1710
 (not in Sperling)
 (no headstone)

J E
 J 736
 J 710

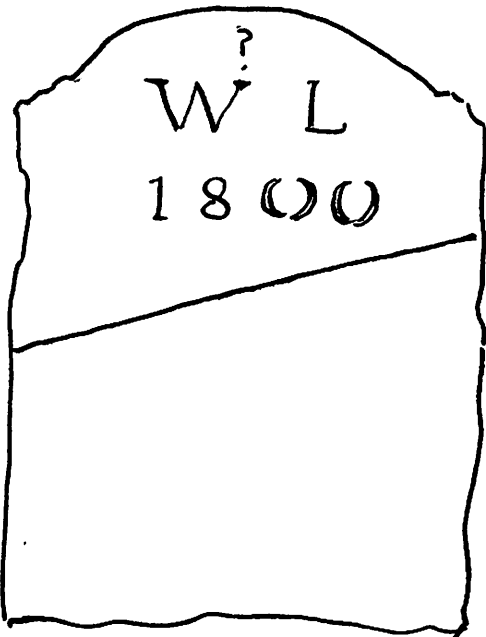
(Sperling's record no. not found)

Grave Memorial Recording Form: St. John the Baptist, Westbourne, W. Sussex

1	National Grid Reference	255 073	Date	1	6	1	0	8	1
2	Name of recorder(s)	BEAYL LINDER							
3	Record No. of memorial (plus components i,ii,iii etc.)								
4	No. of components or inscribed faces (record on reverse if possible)	0	R			6	3	1	
5	Type of memorial: 1 = flat 2 = head 3 = tomb 4 = foot 5 = tablet 6 = other								
6	Material and geology	LIMESTONE							
7	Stone mason or undertaker								
8	Which surfaces inscribed (facing N, S, E or W)	N/A							
9	No. of people commemorated	1							
10	Condition of monument: 1=sound 2=displaced 3=leaning 4=collapsed 5=damaged	2 5							
11	Technique of inscription: 1 = incised 2 = carved in relief 3 = cast in relief 4 = lead letters 5 = painted	1							
12	Condition of inscription 1 = very good 2 = clear 3 = worn but decipherable 4 = partly legible 5 = illegible	3							
13	Dimensions (metric)	height	4	0	0	width	3	5	0
14	Date of memorial	1800	Thickness (or length in case of tombs)	Register not found					

Drawing or Photograph

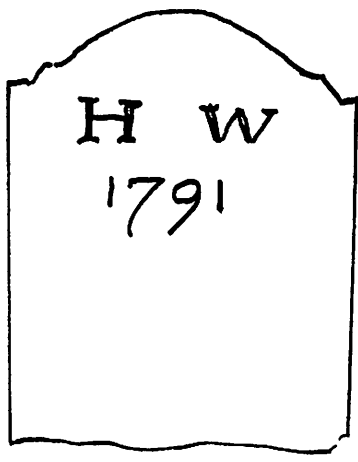
Inscription



not found

Grave Memorial Recording Form: St. John the Baptist, Westbourne, W. Sussex

1	National Grid Reference	Date	1	6	1	0	0	1
2	Name of recorder(s)	BERYL LINDER						
3	Record No. of memorial (plus components i,ii,iii etc.)	0	R			6	3	2
4	No. of components or inscribed faces (record on reverse if possible)							
5	Type of memorial: 1 = flat 2 = head 3 = tomb 4 = foot 5 = tablet 6 = other	4						
6	Material and geology	LIMESTONE						
7	Stone mason or undertaker							
8	Which surfaces inscribed (facing N, S, E or W)	N/A						
9	No. of people commemorated	1						
10	Condition of monument: 1=sound 2=displaced 3=leaning 4=collapsed 5=damaged	2 5						
11	Technique of inscription: 1 = incised 2 = carved in relief 3 = cast in relief 4 = lead letters 5 = painted	1						
12	Condition of inscription 1 = very good 2 = clear 3 = worn but decipherable 4 = partly legible 5 = illegible	2						
13	Dimensions (metric)	height	3	8	+			
		width	3	6	0			
14	Date of memorial	1791+	Register					
Drawing or Photograph		Inscription						

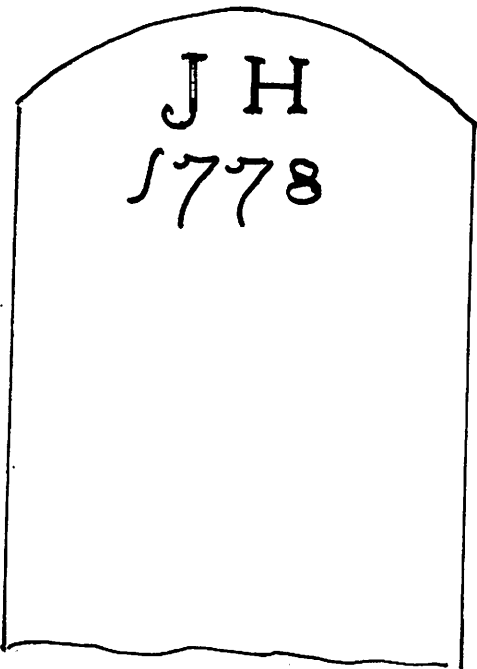


NWB 145 Hannah Watts 1791

(Sperling's record no. 142...)

Grave Memorial Recording Form: St. John the Baptist, Westbourne, W. Sussex

1	National Grid Reference	755 073	Date	1	6	1	2	0	1
2	Name of recorder(s)	BERYL LINDER							
3	Record No. of memorial (plus components i,ii,iii etc.)	0	R			6	3	3	
4	No. of components or inscribed faces (record on reverse if possible)								
5	Type of memorial: 1 = flat 2 = head 3 = tomb 4 = foot 5 = tablet 6 = other								
6	Material and geology	LIMESTONE							
7	Stone mason or undertaker								
8	Which surfaces inscribed (facing N, S, E or W)	N/A							
9	No. of people commemorated								
10	Condition of monument: 1=sound 2=displaced 3=leaning 4=collapsed 5=damaged	2 5							
11	Technique of inscription: 1 = incised 2 = carved in relief 3 = cast in relief 4 = lead letters 5 = painted	1							
12	Condition of inscription 1 = very good 2 = clear 3 = worn but decipherable 4 = partly legible 5 = illegible	1							
13	Dimensions (metric)	height	4	0	0	width	3	0	0
14	Date of memorial	1778+	Thickness (or length in case of tombs)	Register					
Drawing or Photograph		Inscription							



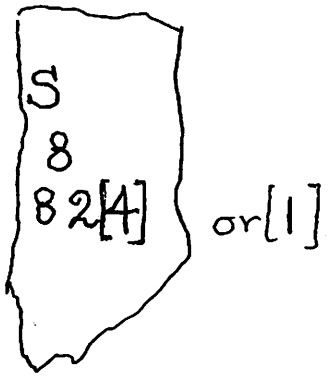
prob. NW75 John Hunt 1778

Grave Memorial Recording Form: St. John the Baptist, Westbourne, W. Sussex

1	National Grid Reference	755 073	Date	2	3	1	0	0	1
2	Name of recorder(s)	BERIL LINDER							
3	Record No. of memorial (plus components i,ii,iii etc.)	O R		63		4			
4	No. of components or inscribed faces (record on reverse if possible)								
5	Type of memorial: 1 = flat 2 = head 3 = tomb 4 = foot 5 = tablet 6 = other	4							
6	Material and geology	LIMESTONE							
7	Stone mason or undertaker								
8	Which surfaces inscribed (facing N, S, E or W)	N/A							
9	No. of people commemorated	2		5		1			
10	Condition of monument: 1=sound 2=displaced 3=leaning 4=collapsed 5=damaged	2		5		1			
11	Technique of inscription: 1 = incised 2 = carved in relief 3 = cast in relief 4 = lead letters 5 = painted	2		5		1			
12	Condition of inscription 1 = very good 2 = clear 3 = worn but decipherable 4 = partly legible 5 = illegible	2		5		1			
13	Dimensions (metric)	height		width		Thickness (or length in case of tombs)		4	
14	Date of memorial	1788+		Register					

Drawing or Photograph

Inscription



prob. NW73
James Sanders 1788
Mary Sanders 1821